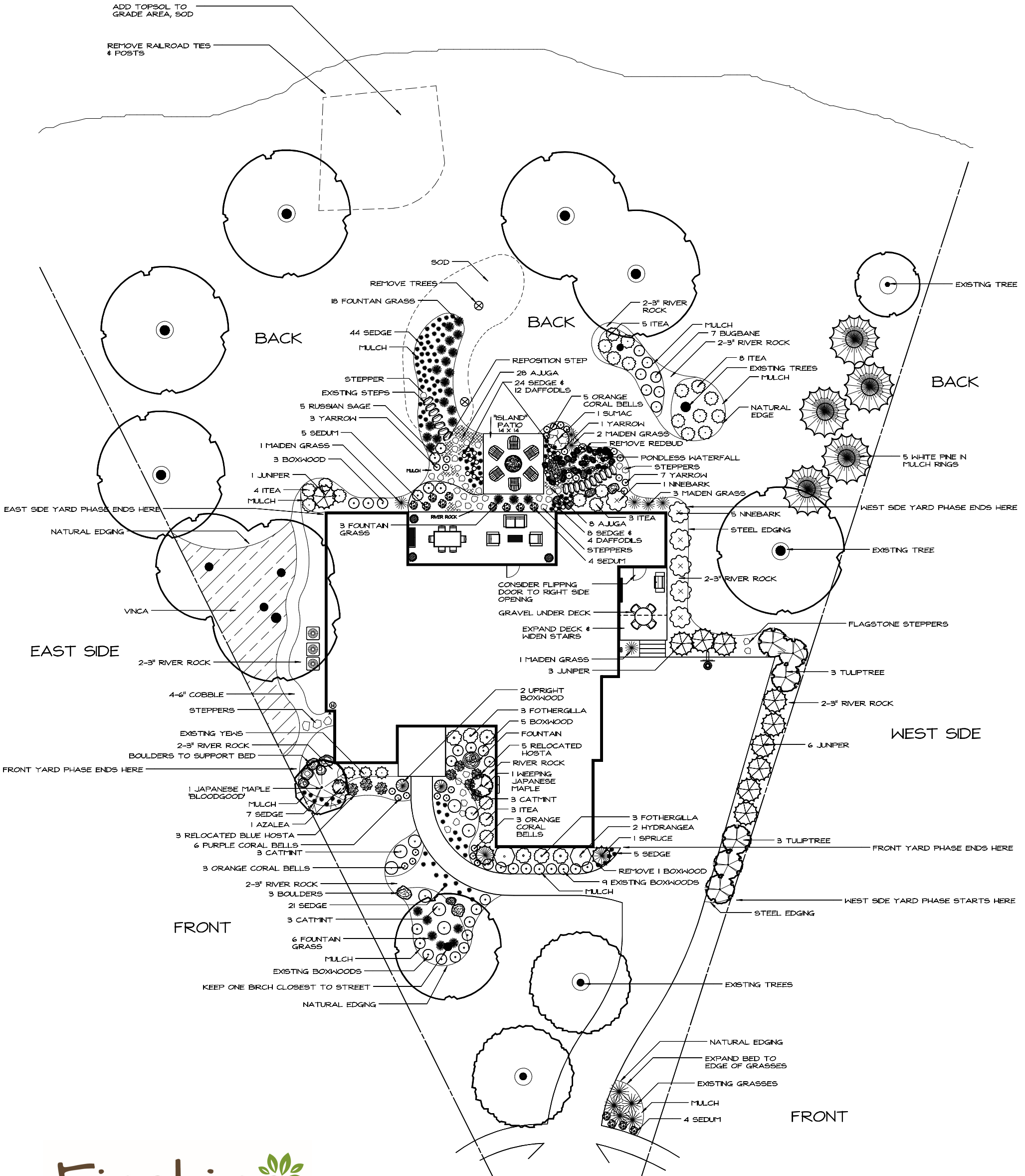




# SAMPLE PLAN- FULL PROPERTY



SAMPLE TAKEOFF

Date:

Area of yard:

<i>Qty</i>	<i>Item</i>	<i>Unit</i>	<i>Cost</i>	<i>Total Price</i>
	PLANTS			
2	Blackgum, Wildfire	2.5"		\$ -
1	Magnolia, Royal Star	#15		\$ -
2	Spruce, Riverside	7-8'		\$ -
3	Sumac, Tiger Eyes	#7		\$ -
15	Boxwood, Green Velvet	#5		\$ -
3	Butterfly Bush, Blue Chip	#3		\$ -
14	Drift Rose, Apricot	#3		\$ -
3	Hydrangea, Blushing Bride	#3		\$ -
4	Ninebark, Summerwine	#3		\$ -
12	Karl Foerster Grass	#3		\$ -
20	Liriope, Variegated	#1		\$ -
6	Butterfly Milkweed	#1		\$ -
15	Coreopsis, Domino	#1		\$ -
9	Dianthus, Neon Star	#1		\$ -
5	Sedum, Matrona	#1		\$ -
			Plant Total	\$ -
	HARDSCAPE			
	Tear out existing - 6 shrubs, plastic edging	hours		\$ -
	Strip sod to create new beds	sq ft		\$ -
	Relocate	hours		\$ -
4	Topsoil to grade or berm	yd		\$ -
40	Bury downspouts- hand dug	lin ft		\$ -
	French drain- hand dug	lin ft		\$ -
6	Mocha Mulch	yd		\$ -
	River Rock- 2-3" Ozark	ton		\$ -
2	River Rock- 2-3" Missouri Rainbow	ton		\$ -
200	Weed Barrier Fabric	sq ft		\$ -
	Edging- natural	lin ft		\$ -
	Edging- black poly	lin ft		\$ -
150	Edging- green steel	lin ft		\$ -
	Edging- 4" limestone	lin ft		\$ -
3	Boulders- Moss Rock (18-24")	each		\$ -
6	Flagstone Steppers Select (3" thick, 24-36")	each		\$ -
	Sod Repair	roll		\$ -
		Hardscape Total		
		<b>Total for project</b>		



Karl Foerster Grass



Ninebark 'Summerwine'



Sumac 'Tiger's Eye'



Boxwood 'Green Mountain'



Hydrangea 'Blushing Bride'



Sumac 'Tiger Eye'



Yarrow 'Cerise Queen'



Dianthus 'Neon Star'



Serbian Spruce 'Riverside'